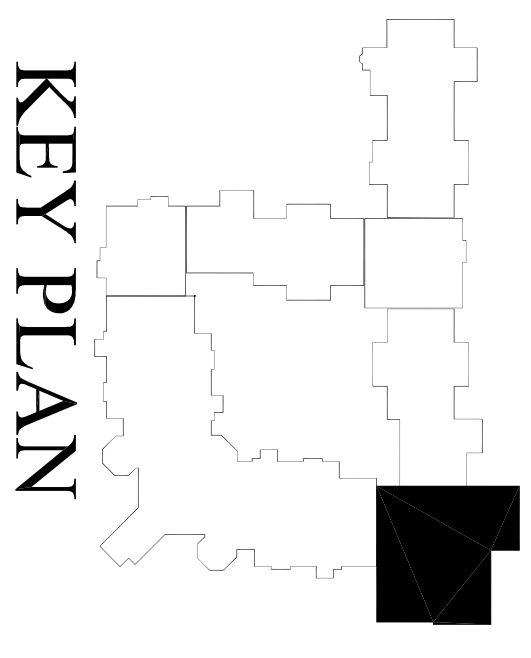


- CODED NOTES — HVAC**
- 1 FIRE DAMPER AT RATED CLG. PENETRATION.
 - 2 FIRE DAMPER IN AIR DEVICE AT FIRE RATED CLG. PENETRATION.
 - 3 FIELD ROUTE DUCT BETWEEN ROOF TRUSSES IN ATTIC.
 - 4 FIELD ROUTE DUCT THROUGH ROOF TRUSS WEBBING IN ATTIC.
 - 5 FIELD ROUTE DUCT BELOW ROOF TRUSSES, AS TIGHT AS POSSIBLE TO FIRECODE DRYWALL ON UNDERSIDE OF TRUSSES.
 - 6 22"x18" MW/CA DUCT BETWEEN ROOF TRUSSES FOR MAKE-UP AIR AND COMBUSTION AIR FOR DRYERS. EXTEND TO 6" ABOVE FINISHED FLOOR. INSTALL INSULATION. SCREEN OPEN END OF DUCT TO 12" BELOW FINISHED CEILING. INSTALL INSPECT SCREEN ON OPEN END OF DUCT BELOW CEILING. INSTALL SMOKE FIRE DAMPER AT CEILING PENETRATION, ELECTRICALLY INTERLOCK SMOKE FIRE DAMPER WITH FIRING CYCLE OF GAS FIRED APPLIANCES BEING SERVED BY COMBUSTION AIR DUCT.
 - 7 22"x18" MW/CA DUCT BETWEEN ROOF TRUSSES FOR MAKE-UP AIR AND COMBUSTION AIR FOR DRYERS. EXTEND TO 6" ABOVE FINISHED FLOOR. INSTALL INSULATION. SCREEN OPEN END OF DUCT TO 12" ABOVE FINISHED FLOOR. INSTALL SMOKE FIRE DAMPER AT CEILING PENETRATION, ELECTRICALLY INTERLOCK SMOKE FIRE DAMPER WITH FIRING CYCLE OF GAS FIRED APPLIANCES BEING SERVED BY COMBUSTION AIR DUCT.

A

**COMMONS B
HVAC FLOOR PLAN**

SCALE: 1/8" = 1'-0"



© COPYRIGHT 2000, MAM ARCHITECTS, INC.

JOB # JOB	DATE DATE
DRAWN BY DRAWN	CHECKED CHECKED
REVISIONS REVISIONS REVISIONS REVISIONS	

FLOOR FLOOR
CLIENT CITY/STATE

NUM
